

# Redistricting Nevada

## Part I: US Congress

---

The three principal contributors (Nevada citizens) to this CD redistricting proposal are, in alphabetical order:

Dwayne Chesnut, Ph.D., Retired Scientist, [Daches@Earthlink.net](mailto:Daches@Earthlink.net), (655-5505)

Forrest Darby, Organizer and Mapmaker, [Forrest.Darby@cox.net](mailto:Forrest.Darby@cox.net), (435-7270)

Mike Selvage, IT and GIS Specialist, [MWselvage@cox.net](mailto:MWselvage@cox.net), or (454-3235)

**Proposed Nevada Congressional District Boundaries**

**Legend**

County Lines



Major Roads



CD 2: 674,167



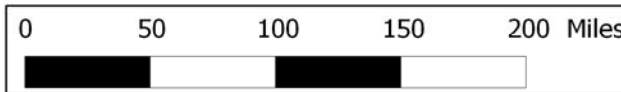
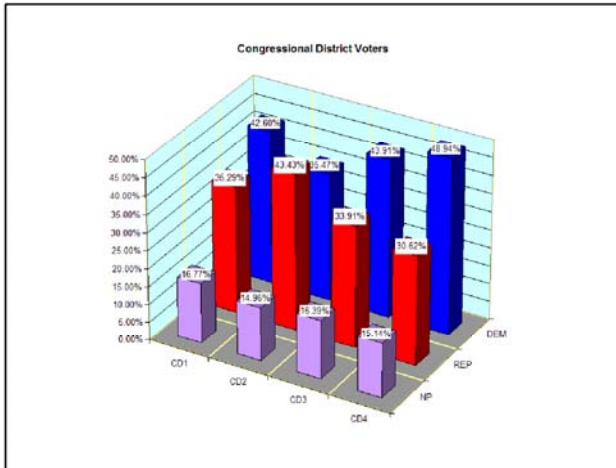
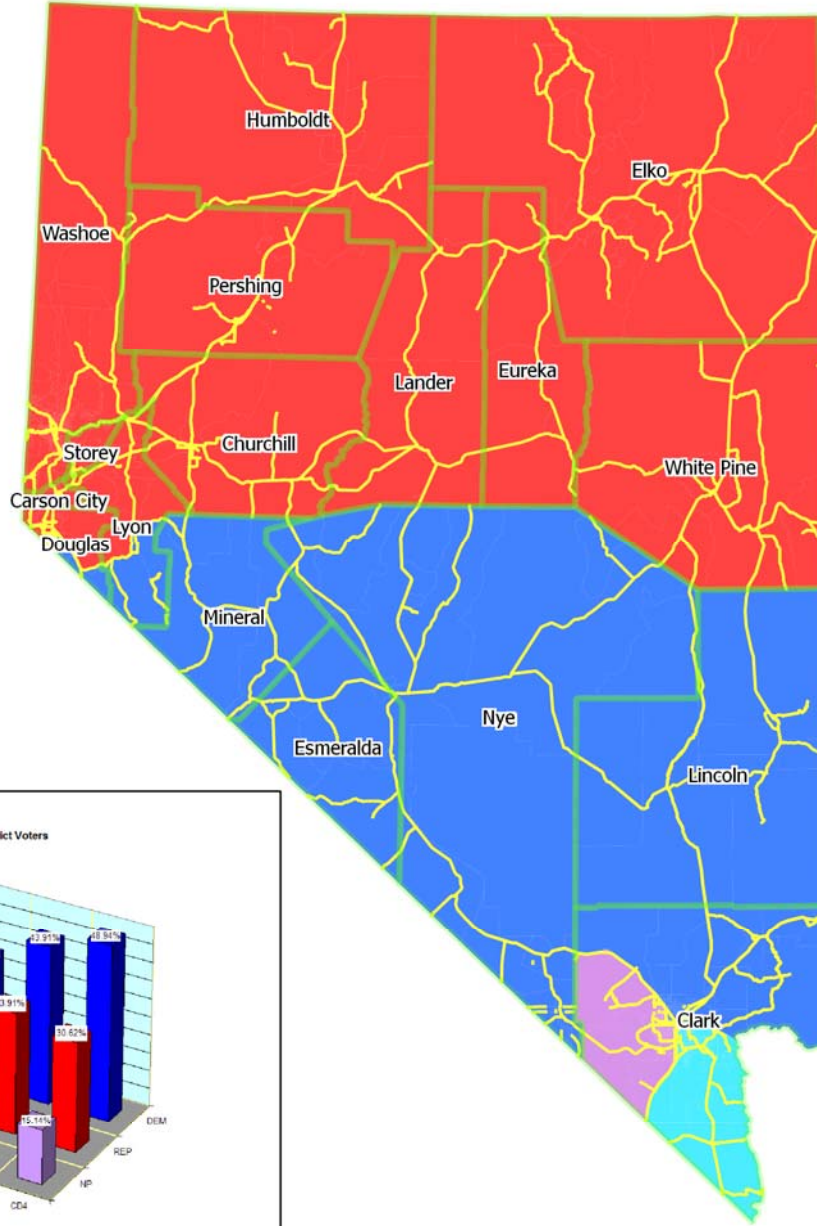
CD 4: 675,034



CD 3: 675,806



CD 1: 675,544



## Redistricting Nevada

This report documents Part I of a grassroots proposal by several concerned Nevadans to develop rational boundaries for United States Congressional Districts and all State legislative Districts, based on several months of work. The effort has been guided by two major principles:

1. *Equal population in each District.* Each Congressional District (CD) should contain 25% of the total Nevada population determined by the 2010 Census, within limits mandated by the U.S. Supreme Court decision in *Abrams v. Johnson*, 117 S. Ct. 1925 (1997). These limits require the difference in population between the largest and smallest district to be less than 1% of the target population – for Nevada, the target is 675,138 for each CD. To the extent practical, similar standards will be applied in Part II for State Senate Districts (SDs) and in Part III for State Assembly Districts (ADs), but the percentage deviation in population may be larger for the State Legislative District than for CDs.
2. *No gerrymandering.* District Boundaries should follow Interstates, U.S. Highways, State Highways, major roads and streets, and other natural demarcations unless there is a good reason to deviate (for example, to avoid splitting an isolated community such as Indian Springs).

Census 2010 population totals are listed in the map legend on the facing page. The difference in population between the largest district (CD 3) and the smallest is (CD 2) is 1,639 people – only 0.24% of the target. The bar graph shows the percentage registration of Democrats, Nonpartisans, and Republicans in each proposed district.

Even though the districts have the same population, the following table shows large differences in adult population, voter registration, and 2010 turnout among the districts.

District	Population	Adults	Registered	Turnout
CD 1	675,544	523,624	271,656	168,597
		77.51%	40.21%	24.96%
CD 2	674,167	513,730	344,120	228,245
		76.20%	51.04%	33.86%
CD 3	675,806	522,457	287,649	176,583
		77.31%	42.56%	26.13%
CD 4	675,034	475,732	254,644	148,387
		70.48%	37.72%	21.98%

Percentages are based on total population. The range of turnout is especially striking, with a low of 21.98 % in CD 4 and a high of 33.86% in CD 2. CD 1 and CD 3 are very close to each other in percentages of adults, registered voters, and turnout. The significance of these differences will be discussed in later sections.

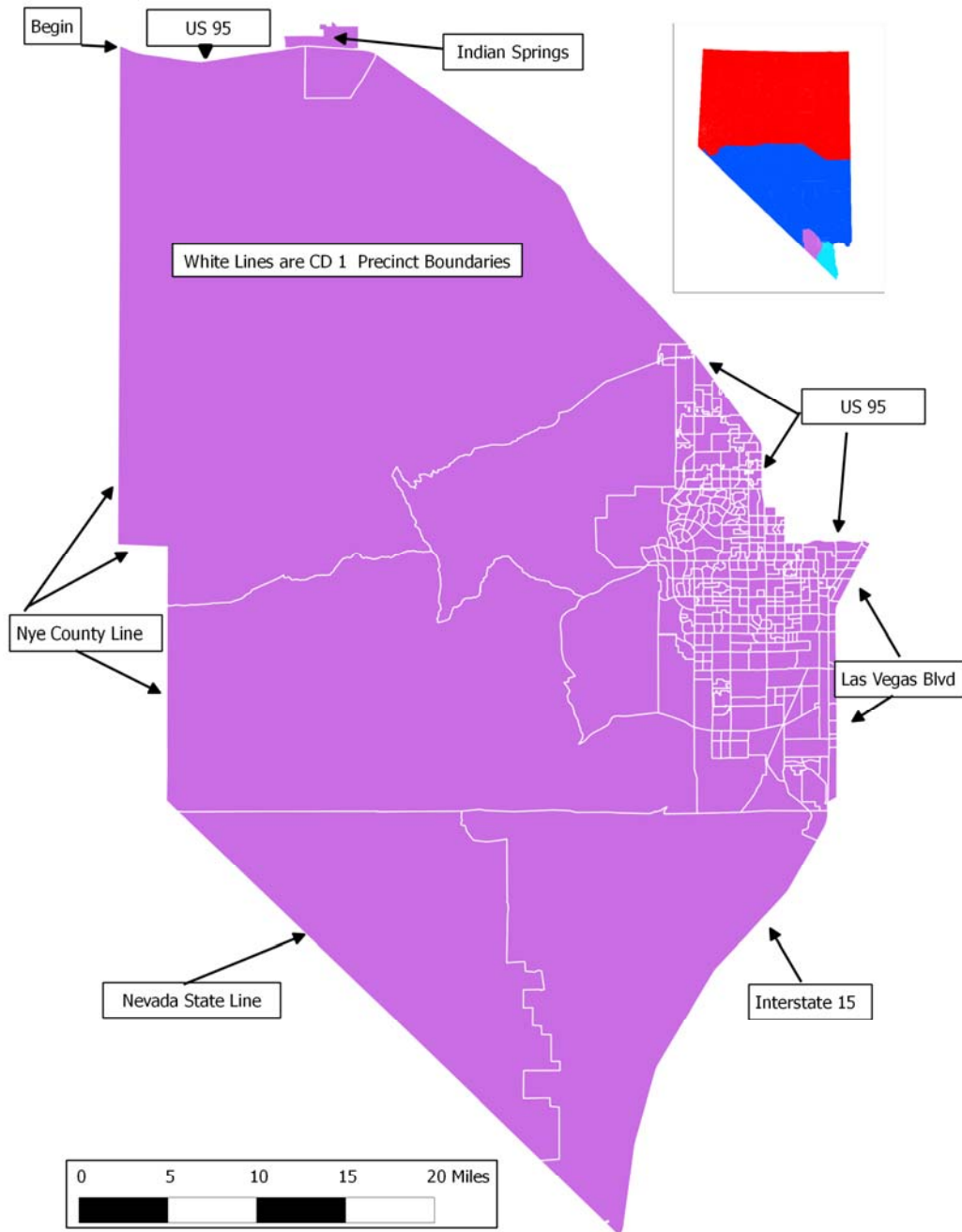
## ***I. Congressional Districts***

### **A. Congressional District 1 Boundaries**

- Begin at Nye County Line and US Hwy 95
- East on US Hwy 95 to Precinct 3543 (north side of Indian Springs)
- Include Precinct 3543, then continue east and south on US Hwy 95 to Smoke Ranch Road
- East to N Torrey Pines Dr
- South to W Lake Mead Blvd
- East to N Jones Blvd
- South to US Hwy 95
- East to Las Vegas Blvd
- South on Las Vegas Blvd to Saint Rose Pkwy
- Southwest on Saint Rose Pkwy to I-15
- South on I-15 to California State Line
- Northwest on California State Line to Nye County Line
- North on Nye County Line to the beginning at US Hwy 95

*The map on the following page shows most of the boundaries described above. However, some of them cannot be labeled legibly at the scale used in the drawing.*

*A Grassroots Proposal For Redistricting Nevada*

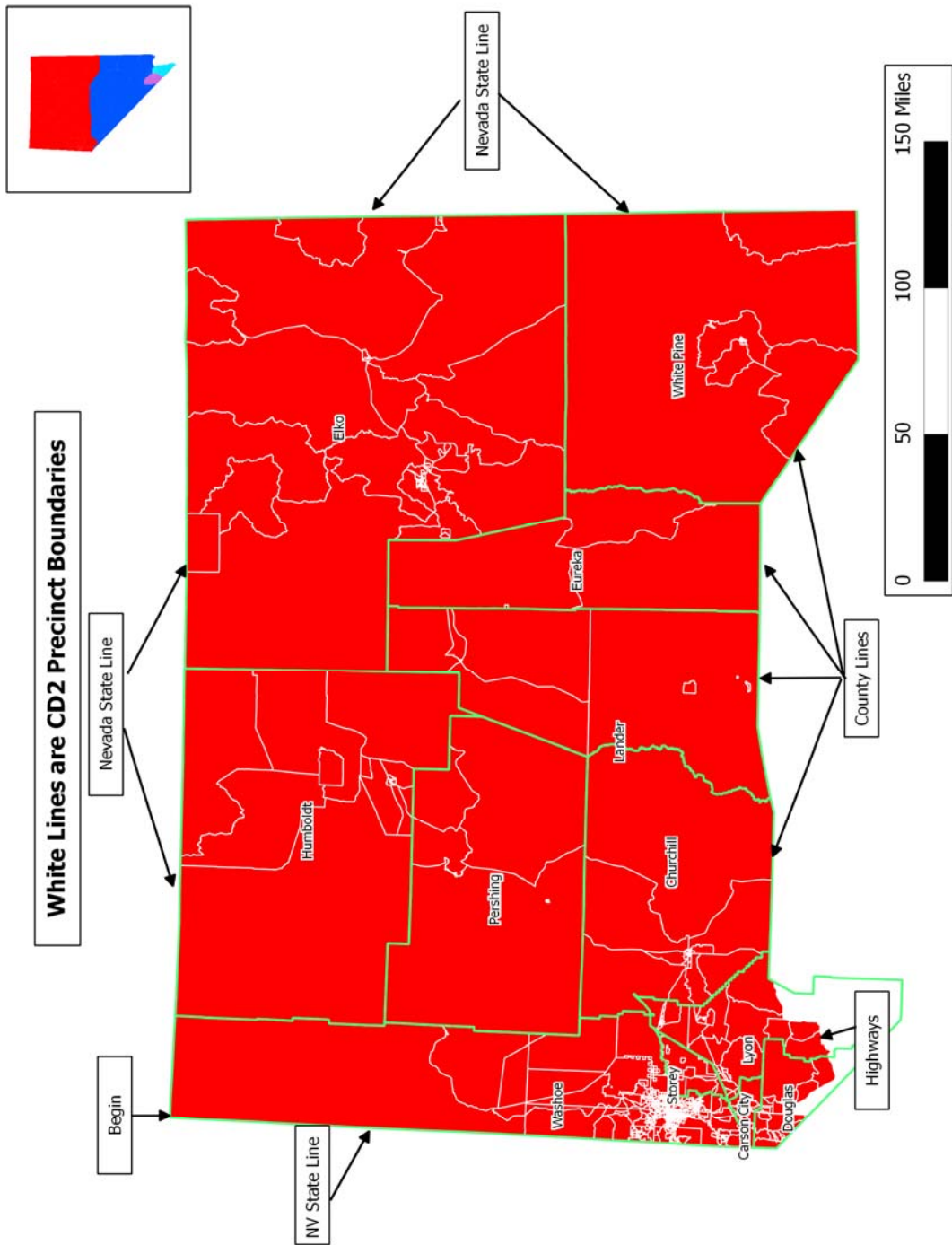


**B. Congressional District 2 Boundaries**

- Begin at the intersection of the California, Oregon, and Nevada State Lines
- East on the northern Nevada State Line to the eastern Nevada State Line
- South to the southern White Pine County Line
- West and northwest to the southern Eureka County Line
- West to the southern Lander County Line
- West to the southern Churchill County Line
- West to the Lyon County Line
- West and southwest to US Hwy 95
- West-southwest to State Hwy 339
- South to State Hwy 208
- Southwest to US Hwy 395
- Northwest to State Hwy 88
- South to the Nevada State Line
- Northwest, then north to the beginning

*As in the case of CD 1, not all of the features described in the text above can be labeled legibly at the scale of the map on the next page. Major elements are labeled.*

A Grassroots Proposal For Redistricting Nevada



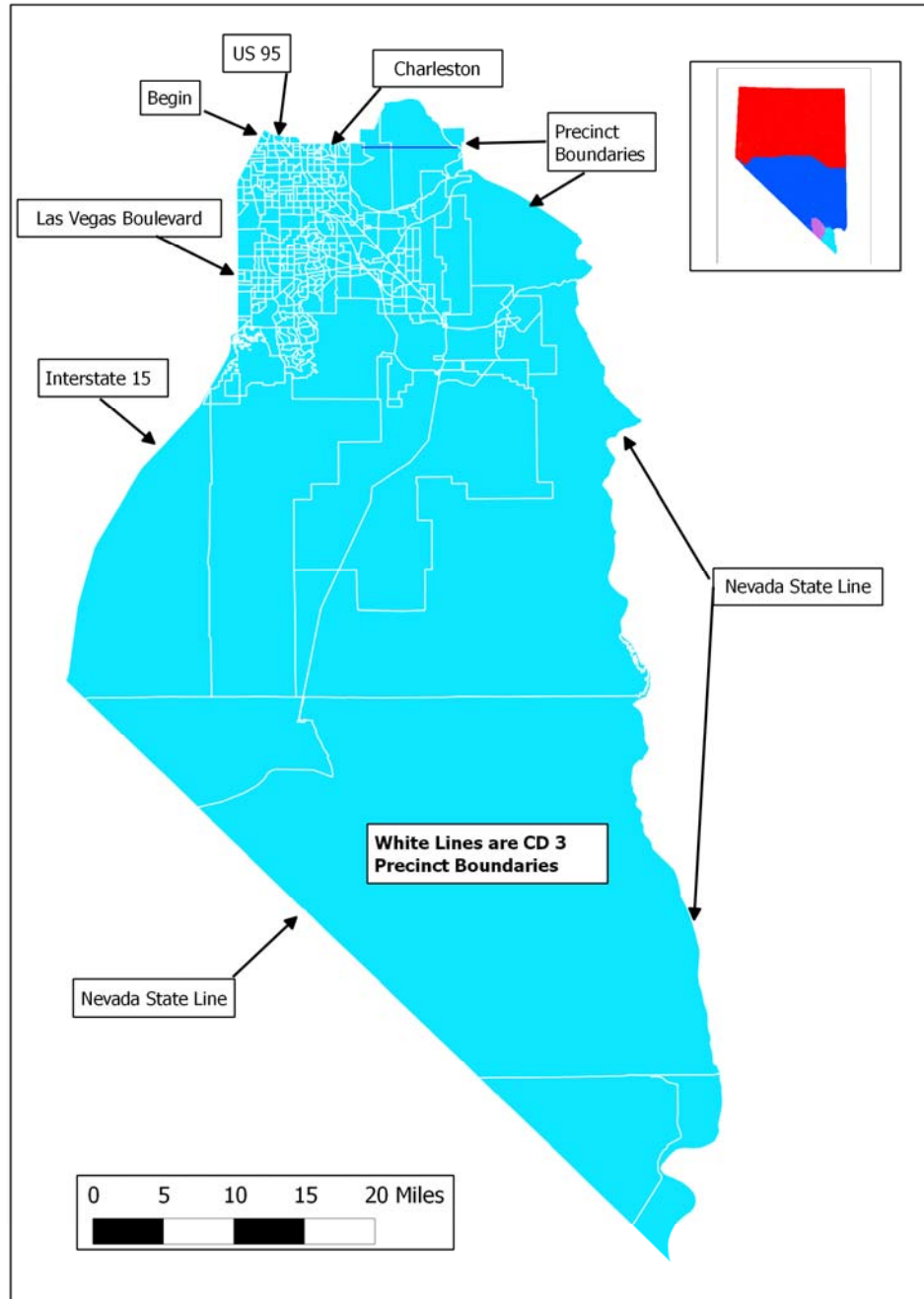
### **C. Congressional District 3 Boundaries**

- Begin at US Hwy 95 and Las Vegas Blvd
- East and south on US Hwy 95 to E Charleston Blvd
- East on E Charleston Blvd to its end
- East on an extension of E Charleston Blvd along Latitude 36.159183° to the western boundary of Precinct 1534
- South to the northern boundary of Precinct 1050
- Southeast to the Nevada State Line
- South to the Nevada State Line intersection with Arizona and California State Lines
- Northwest on the Nevada State Line to I-15
- North, then north-northeast to Saint Rose Pkwy
- Northeast to Las Vegas Blvd
- North on Las Vegas Blvd to the beginning at US Hwy 95

*Note: the extension of Charleston, shown as a dark blue line on the map on the facing page, cuts through Precincts 7385, 7913, and 2417. The complete extent of these Precincts is shown on the map as part of CD 3, but only the areas south of the Charleston extension would be included when Precinct boundaries are redrawn. Most, if not all, of the area in these Precincts north of the Charleston extension is unpopulated.*



*A Grassroots Proposal For Redistricting Nevada*

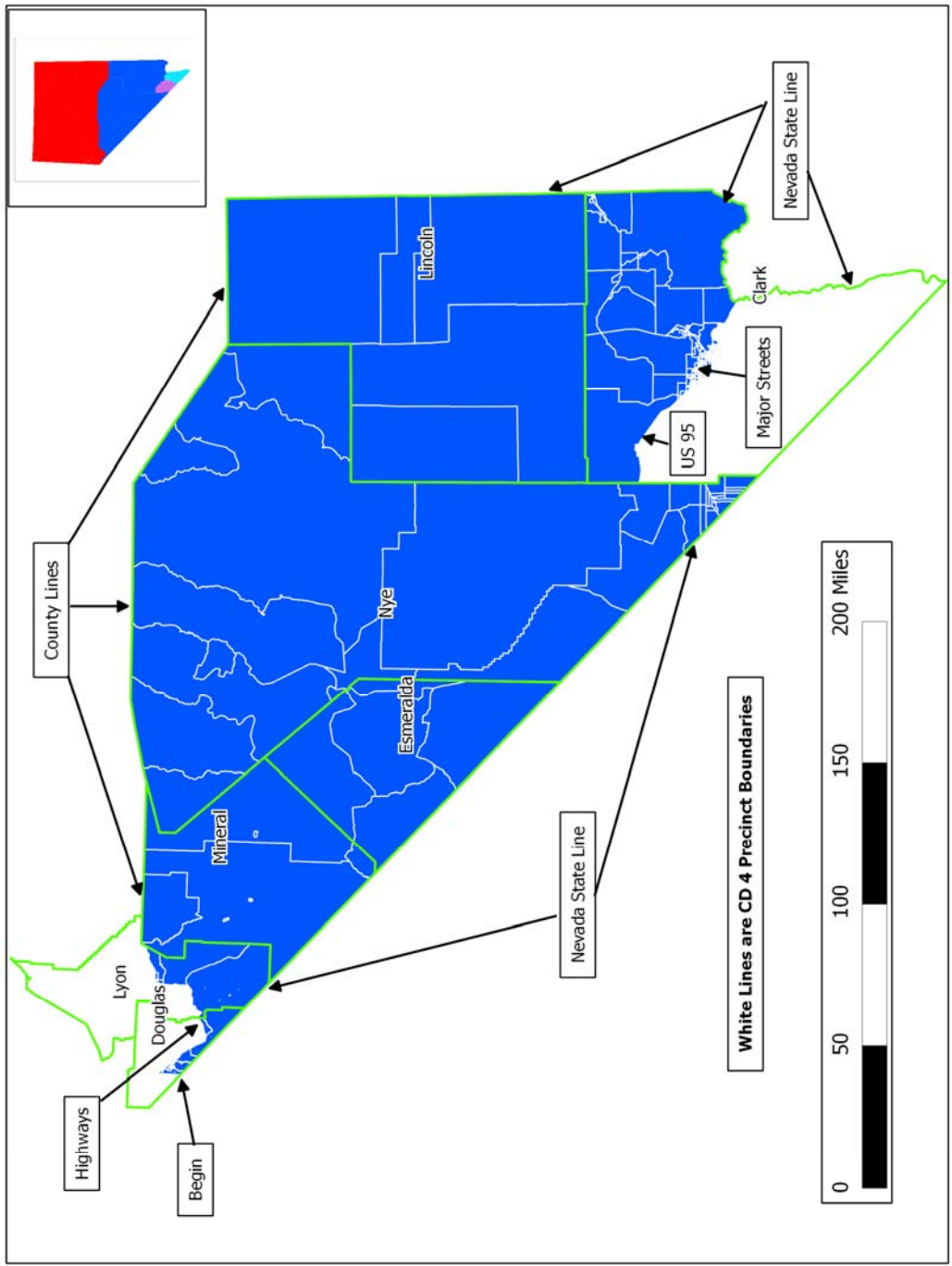


**D. Congressional District 4 Boundaries**

- Begin at the intersection of State Hwy 88 with the California State Line
- North to US Hwy 395
- Southeast to State Hwy 208
- East-northeast to State Hwy 339
- North to US Hwy 95
- East-northeast to the Mineral County Line
- Northeast, then east to the northern Nye County Line
- East, then southeast to the northern Lincoln County Line
- East to the eastern Nevada State Line
- South to the intersection with the Arizona State Line
- West to the northern boundary of CD 3
- West to the intersection of Interstate 15 and US Hwy 95
- West to N Jones Blvd
- North to W Lake Mead Blvd
- West to N Torrey Pines Dr
- North to Smoke Ranch Road
- West to US Hwy 95
- North, then northwest to Indian Springs
- Include Precinct 3543, then west to the eastern Nye County Line
- South to the Nevada State Line
- Northwest to the beginning at State Hwy 88

*As in the case of the other Congressional Districts, some of the smaller details cannot be accurately labeled at the scale of the map on the facing page. Major elements are labeled.*

A Grassroots Proposal For Redistricting Nevada

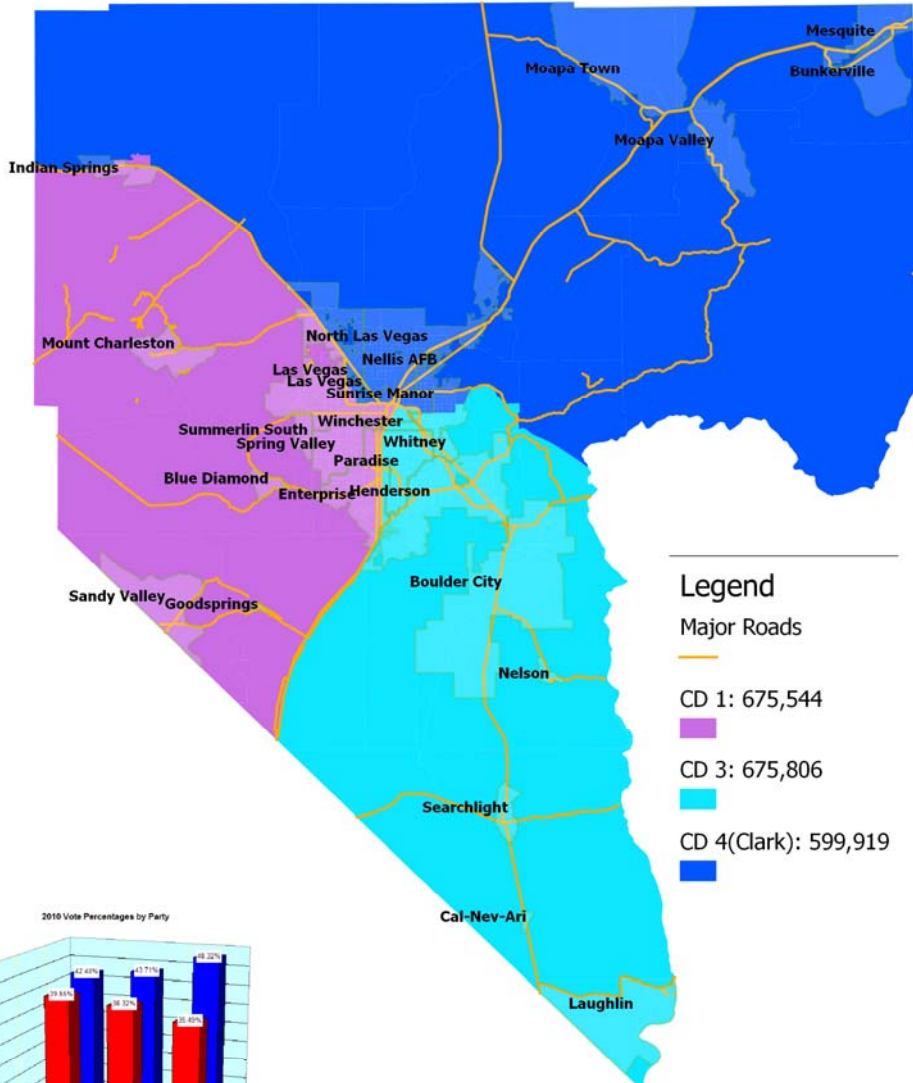


**E. Congressional Districts in Clark County**

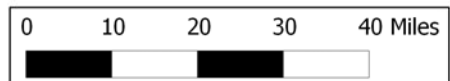
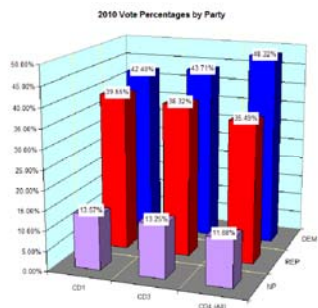
As determined by the 2010 Census, Nevada's total population as of April 1, 2010 was 2,700,551. Dividing this number by 4 provides the target population of 675,138 for each district. The Census also determined that Clark County's population was 1,951,269 on the date of record – 72.25% of the state's total – just 2.75% short of the percentage needed to place three CDs completely within Clark County. Because of Clark County's large population and resulting importance in elections, we prepared the map on the facing page to provide a better geographical perspective on the three districts entirely or mostly within Clark County.

The Clark County portion of our proposed CD 4 has a total population of 599,919, requiring 75,219 people to be added from the other counties in Nevada to reach the target. The part of the proposed CD 4 boundary outside of Clark County contains 75,115 people, just 104 short of the target.

**Proposed Clark County Congressional Districts**



- Legend**
- Major Roads
  - CD 1: 675,544
  - CD 3: 675,806
  - CD 4(Clark): 599,919



**F. Population and Demographics**

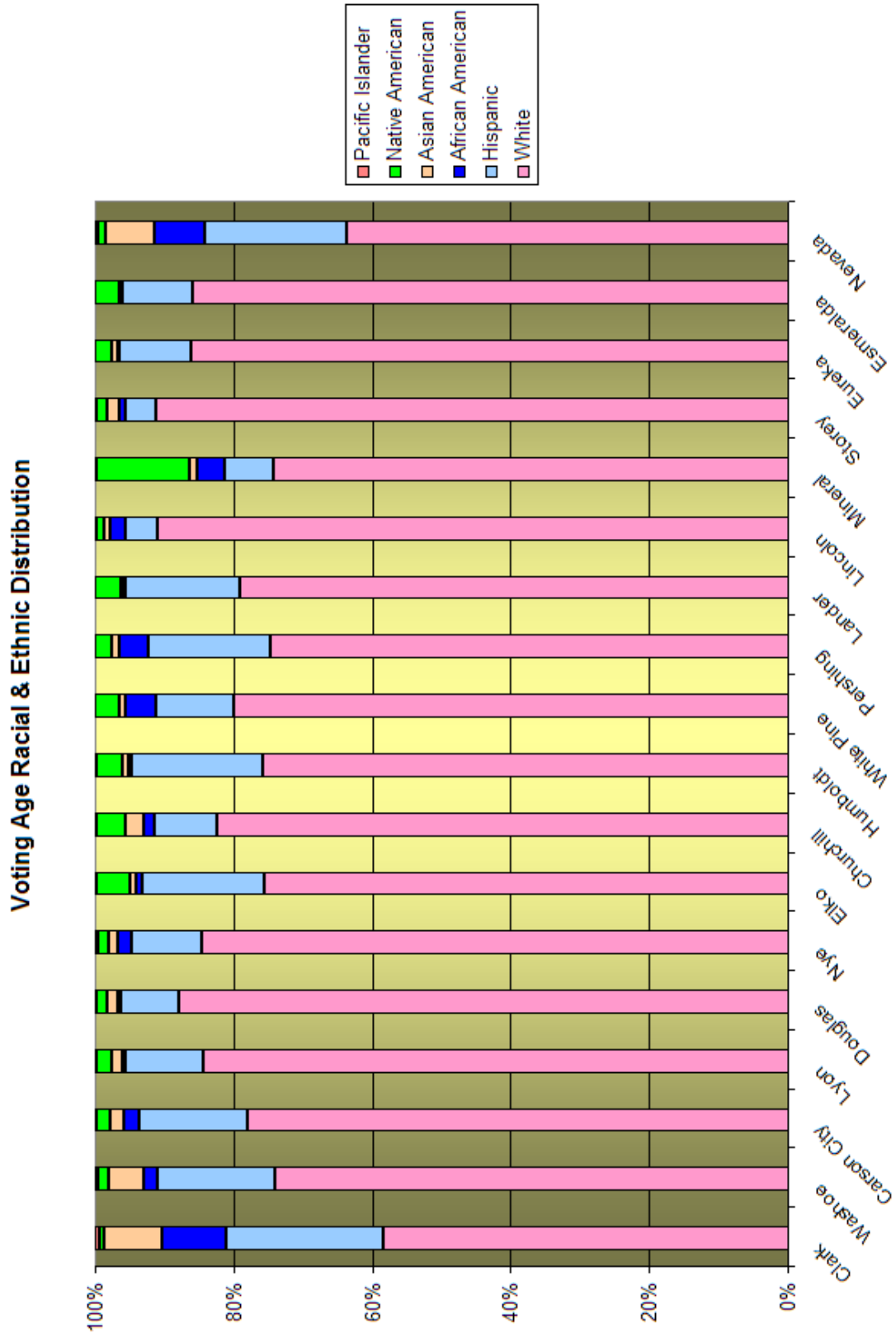
**(1) Distribution of Total Population by Counties**

Total Population							
County	Population	White	Hispanic	African American	Native American	Asian American	Pacific Islander
Clark	1951269	1188112	568644	204379	14422	168831	13628
Washoe	421407	324070	93724	9814	7209	21790	2542
Carson City	55274	44807	11777	1054	1306	1181	101
Lyon	51980	44164	7674	417	1286	725	130
Elko	48818	38772	11158	378	2594	442	69
Douglas	46997	42130	5103	201	896	725	66
Nye	43946	37755	5967	874	703	572	211
Churchill	24877	20407	3009	395	1129	665	51
Humboldt	16528	13053	4038	87	692	120	19
White Pine	10030	8575	1326	395	419	97	10
Pershing	6753	5528	1508	253	217	87	7
Lander	5775	4853	1219	20	242	21	1
Lincoln	5345	4871	332	121	61	40	15
Mineral	4772	3462	436	196	742	53	6
Storey	4010	3693	228	40	64	66	15
Eureka	1987	1775	238	2	47	18	0
Esmeralda	783	661	120	0	33	3	0
<b>Nevada</b>	<b>2700551</b>	<b>1786688</b>	<b>716501</b>	<b>218626</b>	<b>32062</b>	<b>195436</b>	<b>16871</b>

Not surprisingly, there is a wide spread in the distribution of different racial and ethnic groups across Nevada, with the greatest diversity in the more urban areas of the state. The table also vividly depicts the extremely large differences in total population from county to county, a principal source of the difficulty in creating fair political district boundaries.

The bar graph on the facing page shows the percentage distribution of different racial and ethnic classifications within each county, and within the state as a whole.

A Grassroots Proposal For Redistricting Nevada



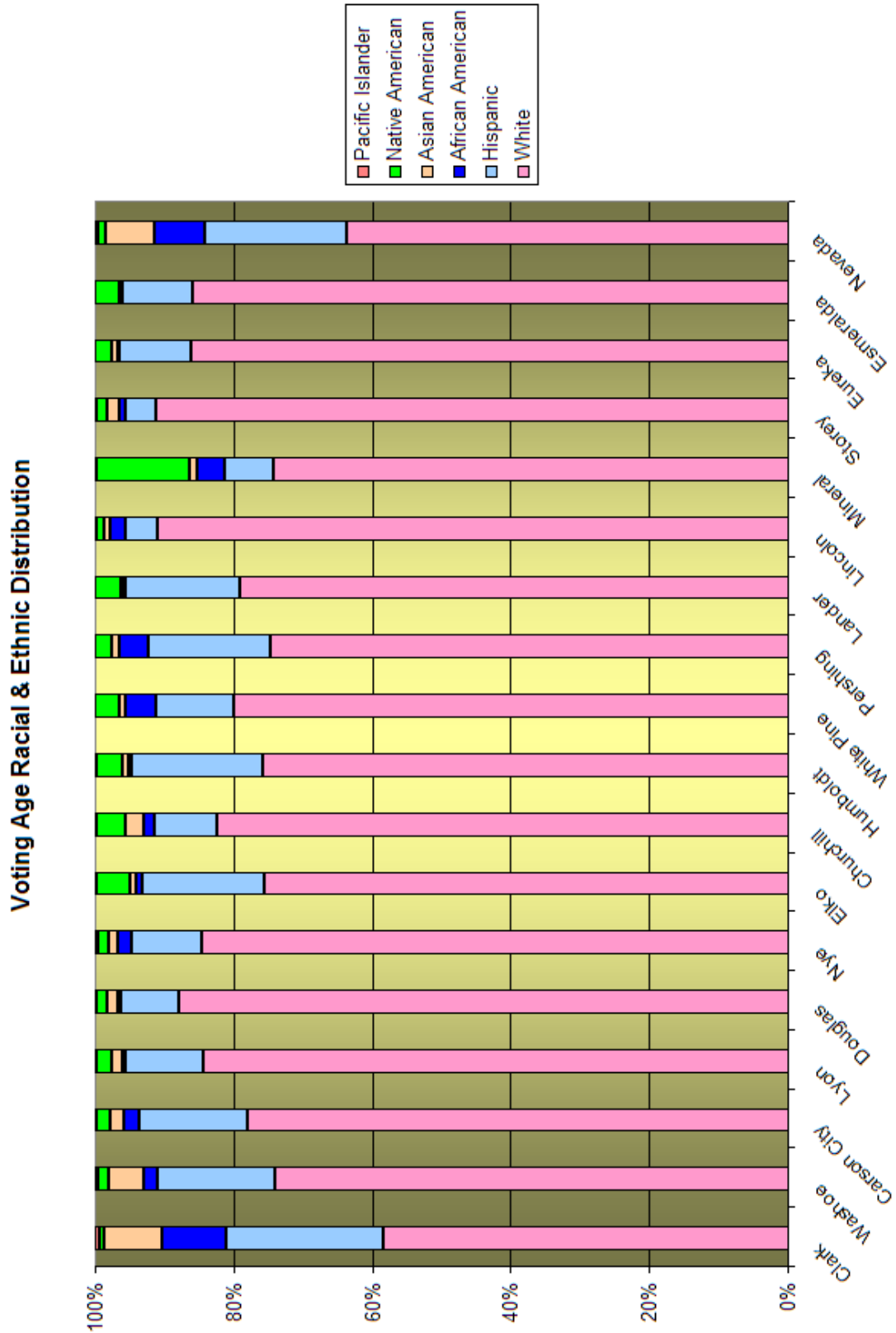
**(2) Distribution of Voting Age Population by Counties**

<b>Voting Age Population</b>							
<b>County</b>	<b>Population</b>	<b>White</b>	<b>Hispanic</b>	<b>African American</b>	<b>Native American</b>	<b>Asian American</b>	<b>Pacific Islander</b>
<b>Clark</b>	1462651	937526	362902	147787	10776	135845	9813
<b>Washoe</b>	322075	256907	58337	7218	5146	17401	1777
<b>Carson City</b>	43459	36389	7364	949	975	944	85
<b>Lyon</b>	39052	34202	4565	253	888	590	92
<b>Douglas</b>	37512	34254	3266	141	652	612	57
<b>Nye</b>	34858	30665	3683	680	550	510	155
<b>Elko</b>	34588	28216	6580	280	1845	360	44
<b>Churchill</b>	18603	15762	1746	264	788	544	36
<b>Humboldt</b>	12004	9786	2444	71	495	101	17
<b>White Pine</b>	7857	6800	955	376	286	77	6
<b>Pershing</b>	5431	4572	1084	249	142	72	5
<b>Lander</b>	4181	3593	758	11	169	15	1
<b>Lincoln</b>	3908	3634	186	84	41	37	10
<b>Mineral</b>	3898	2970	283	151	542	46	6
<b>Storey</b>	3309	3075	152	29	51	54	11
<b>Eureka</b>	1506	1351	162	2	37	16	0
<b>Esmeralda</b>	651	571	67	0	23	3	0
<b>Nevada</b>	2035543	1410273	454534	158545	23406	157227	12115

The diversity of the demographic characteristics of the voting age population is, naturally, similar to the diversity of the total population.



A Grassroots Proposal For Redistricting Nevada



**(3) Demographics by Congressional District**

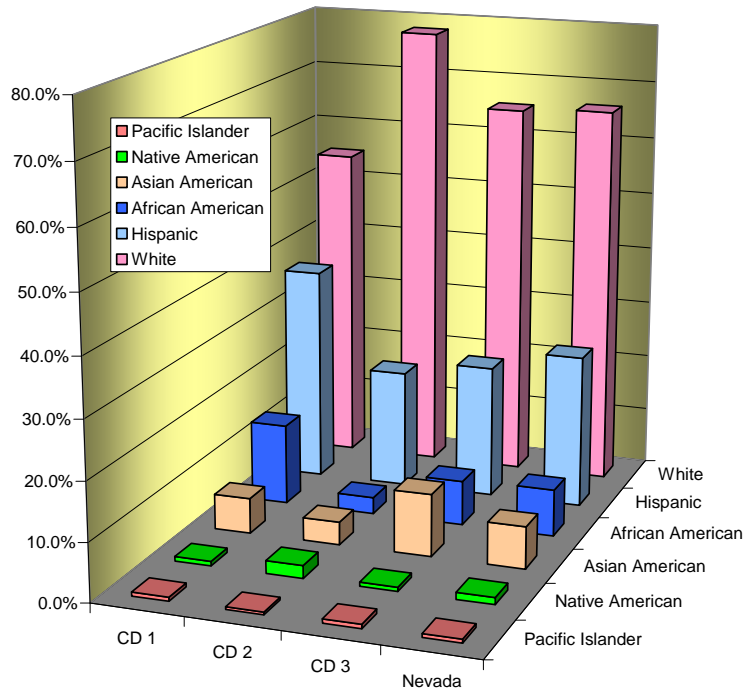
**(a) Current Districts**

Population Demographics for Current Congressional Districts							
District	Population	White	Hispanic	African American	Native American	Asian American	Pacific Islander
CD 1	820134	450976	305115	114262	6409	50036	5488
		54.99%	37.20%	13.93%	0.78%	6.10%	0.67%
CD 2	836562	652927	171063	23973	18323	33224	3743
		78.05%	20.45%	2.87%	2.19%	3.97%	0.45%
CD 3	1043855	682785	240323	80391	7330	112176	7640
		65.41%	23.02%	7.70%	0.70%	10.75%	0.73%
Nevada	2700551	1786688	716501	218626	32062	195436	16871
		66.16%	26.53%	8.10%	1.19%	7.24%	0.62%
Voting Age Demographics for Current Congressional Districts							
District	Population	White	Hispanic	African American	Native American	Asian American	Pacific Islander
CD 1	597889	349317	191974	81566	4684	40714	3947
		58.43%	32.11%	13.64%	0.78%	6.81%	0.66%
CD 2	639278	516820	105885	17755	13145	26798	2659
		80.84%	16.56%	2.78%	2.06%	4.19%	0.42%
CD 3	798376	544136	156675	59224	5577	89715	5509
		68.16%	19.62%	7.42%	0.70%	11.24%	0.69%
Nevada	2035543	1410273	454534	158545	23406	157227	12115
		69.28%	22.33%	7.79%	1.15%	7.72%	0.60%

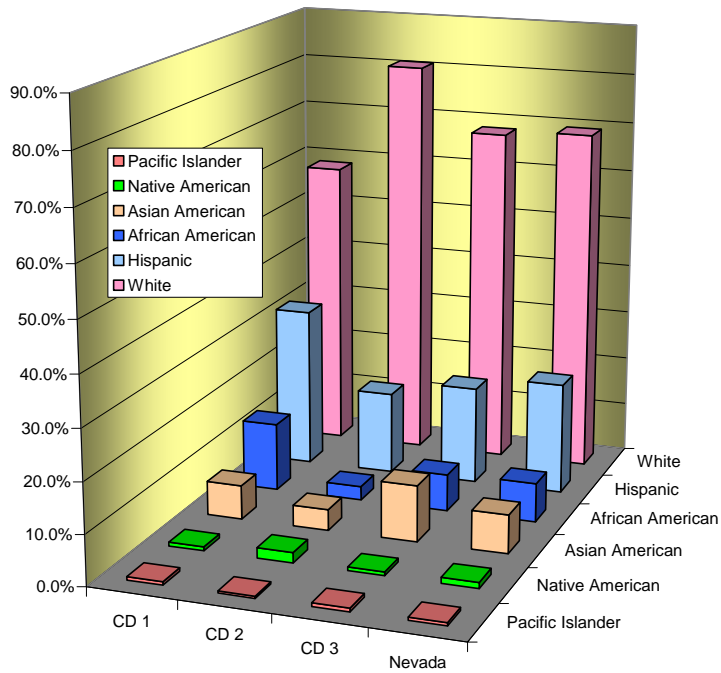
*Note: Percentages in rows do not sum to 100% because of overlapping demographic categories in the Census tables, and are intended as semi-quantitative guidelines in evaluating changes resulting from redistricting.*

# A Grassroots Proposal For Redistricting Nevada

## Population Demographics for Current Congressional Districts



## Voting Age Demographics for Current Congressional Districts



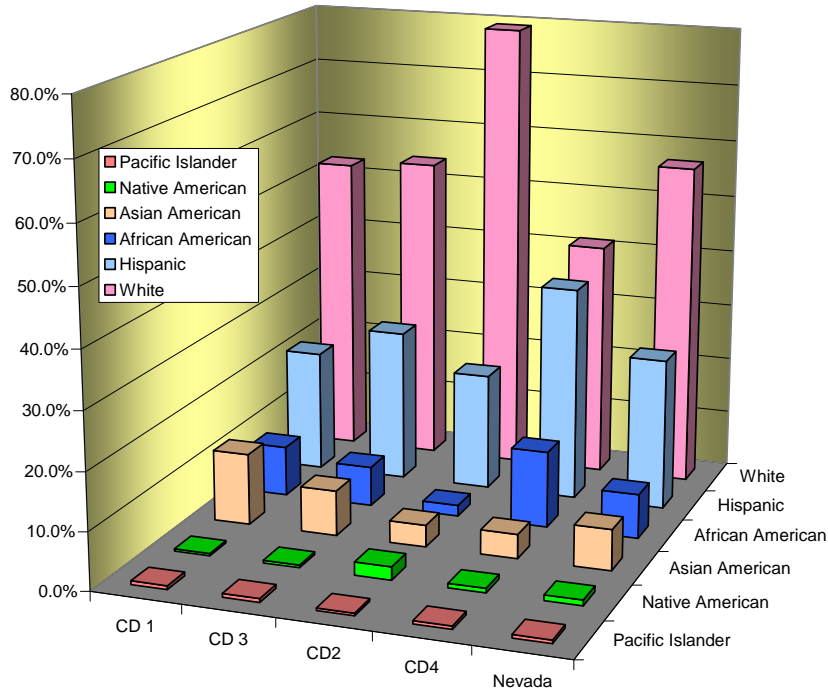
**(b) Proposed Districts**

<b>Population Demographics for Proposed Congressional Districts</b>							
District	Population	White	Hispanic	African American	Native American	Asian American	Pacific Islander
CD 1	675544	356373	144251	59099	2682	84253	4427
		<b>52.75%</b>	<b>21.35%</b>	<b>8.75%</b>	<b>0.40%</b>	<b>12.47%</b>	<b>0.66%</b>
CD 3	675806	364814	180352	46909	3215	53186	4579
		<b>53.98%</b>	<b>26.69%</b>	<b>6.94%</b>	<b>0.48%</b>	<b>7.87%</b>	<b>0.68%</b>
CD2	674167	534529	138106	12960	15326	25742	2980
		<b>79.29%</b>	<b>20.49%</b>	<b>1.92%</b>	<b>2.27%</b>	<b>3.82%</b>	<b>0.44%</b>
CD4	675034	278815	253792	90100	5149	28545	3731
		<b>41.30%</b>	<b>37.60%</b>	<b>13.35%</b>	<b>0.76%</b>	<b>4.23%</b>	<b>0.55%</b>
Nevada	2700551	1534531	716501	209068	26372	191726	15717
		<b>56.82%</b>	<b>26.53%</b>	<b>7.74%</b>	<b>0.98%</b>	<b>7.10%</b>	<b>0.58%</b>
<b>Voting Age Demographics for Proposed Congressional Districts</b>							
District	Population	White	Hispanic	African American	Native American	Asian American	Pacific Islander
CD 1	523624	343008	96028	46563	3192	68740	3557
		<b>65.51%</b>	<b>18.34%</b>	<b>8.89%</b>	<b>0.61%</b>	<b>13.13%</b>	<b>0.68%</b>
CD 3	522457	361484	119390	37629	3978	44276	3583
		<b>69.19%</b>	<b>22.85%</b>	<b>7.20%</b>	<b>0.76%</b>	<b>8.47%</b>	<b>0.69%</b>
CD2	513730	420963	85638	9778	10926	20615	2104
		<b>81.94%</b>	<b>16.67%</b>	<b>1.90%</b>	<b>2.13%</b>	<b>4.01%</b>	<b>0.41%</b>
CD4	475732	284818	153478	64575	5310	23596	2871
		<b>59.87%</b>	<b>32.26%</b>	<b>13.57%</b>	<b>1.12%</b>	<b>4.96%</b>	<b>0.60%</b>
Nevada	2035543	1410273	454534	158545	23406	157227	12115
		<b>69.28%</b>	<b>22.33%</b>	<b>7.79%</b>	<b>1.15%</b>	<b>7.72%</b>	<b>0.60%</b>

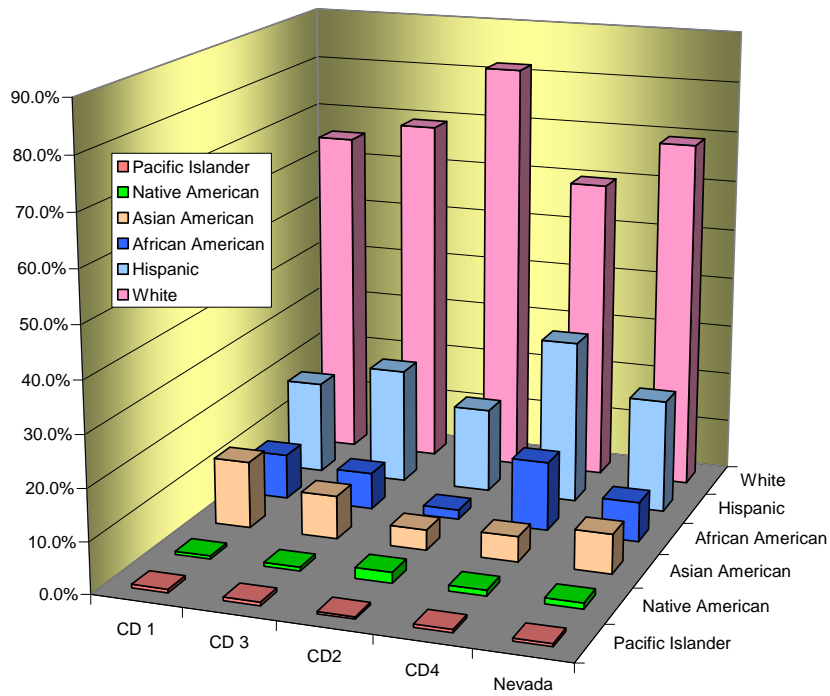
*Note: Percentages in rows do not sum to 100% because of overlapping demographic categories in the Census tables, and are intended as semi-quantitative guidelines in evaluating changes resulting from redistricting.*

# A Grassroots Proposal For Redistricting Nevada

## Population Demographics for Proposed Congressional Districts



## Voting Age Demographics for Proposed Congressional Districts



**G. Voter Registration and Turnout in 2010**

**(1) Current Districts**

<b>Active Registered Voters</b>							
	DEM	INA	LIB	NP	OTH	REP	TOTAL
<b>CD1</b>	144700	11665	1583	44097	1654	80691	284390
Percent	<b>50.88%</b>	<b>4.10%</b>	<b>0.56%</b>	<b>15.51%</b>	<b>0.58%</b>	<b>28.37%</b>	<b>100.00%</b>
<b>CD2</b>	149423	19740	2843	62794	3148	180855	418803
Percent	<b>35.68%</b>	<b>4.71%</b>	<b>0.68%</b>	<b>14.99%</b>	<b>0.75%</b>	<b>43.18%</b>	<b>100.00%</b>
<b>CD3</b>	178002	17724	2410	68582	2159	151600	420477
Percent	<b>42.33%</b>	<b>4.22%</b>	<b>0.57%</b>	<b>16.31%</b>	<b>0.51%</b>	<b>36.05%</b>	<b>100.00%</b>
<b>Voted in 2010 G</b>							
	DEM	INA	LIB	NP	OTH	REP	TOTAL
<b>CD1</b>	83426	5511	777	20108	574	53733	164129
Percent	50.83%	3.36%	0.47%	12.25%	0.35%	32.74%	100.00%
<b>CD2</b>	95779	10683	1642	33498	1514	133113	276229
Percent	34.67%	3.87%	0.59%	12.13%	0.55%	48.19%	100.00%
<b>CD3</b>	109716	9424	1229	34645	924	105880	261818
Percent	<b>41.91%</b>	<b>3.60%</b>	<b>0.47%</b>	<b>13.23%</b>	<b>0.35%</b>	<b>40.44%</b>	<b>100.00%</b>

**(2) Proposed Districts**

<b>Active Registered Voters</b>							
	DEM	INA	LIB	NP	OTH	REP	TOTAL
<b>CD1</b>	115728	11523	1606	45567	1371	95864	271656
Percent	<b>42.60%</b>	<b>4.24%</b>	<b>0.59%</b>	<b>16.77%</b>	<b>0.50%</b>	<b>35.29%</b>	<b>100.00%</b>
<b>CD2</b>	122053	15851	2417	51495	2842	149462	344120
Percent	<b>35.47%</b>	<b>4.61%</b>	<b>0.70%</b>	<b>14.96%</b>	<b>0.83%</b>	<b>43.43%</b>	<b>100.00%</b>
<b>CD3</b>	126295	13103	1778	47147	1787	97538	287649
Percent	<b>43.91%</b>	<b>4.56%</b>	<b>0.62%</b>	<b>16.39%</b>	<b>0.62%</b>	<b>33.91%</b>	<b>100.00%</b>
<b>CD4</b>	124620	10909	1326	38555	1260	77972	254644
Percent	<b>48.94%</b>	<b>4.28%</b>	<b>0.52%</b>	<b>15.14%</b>	<b>0.49%</b>	<b>30.62%</b>	<b>100.00%</b>
<b>Voted in 2010 G</b>							
	DEM	INA	LIB	NP	OTH	REP	TOTAL
<b>CD1</b>	71481	6080	868	22872	612	66686	168597
Percent	<b>42.40%</b>	<b>3.61%</b>	<b>0.51%</b>	<b>13.57%</b>	<b>0.36%</b>	<b>39.55%</b>	<b>100.00%</b>
<b>CD2</b>	79041	8462	1407	27338	1367	110631	228245
Percent	<b>34.63%</b>	<b>3.71%</b>	<b>0.62%</b>	<b>11.98%</b>	<b>0.60%</b>	<b>48.47%</b>	<b>100.00%</b>
<b>CD3</b>	77180	6782	867	23390	704	67661	176583
Percent	<b>43.71%</b>	<b>3.84%</b>	<b>0.49%</b>	<b>13.25%</b>	<b>0.40%</b>	<b>38.32%</b>	<b>100.00%</b>
<b>CD4</b>	71694	5298	650	17628	450	52663	148387
Percent	<b>48.32%</b>	<b>3.57%</b>	<b>0.44%</b>	<b>11.88%</b>	<b>0.30%</b>	<b>35.49%</b>	<b>100.00%</b>

The reader is urged to look carefully at the effect of voter turnout on the partisan edge based on registration. For example, in the most heavily Democratic district, Democrats have 48.94% of the active registered voters, compared to 30.62% for the Republicans, giving an edge of 18.32%. This decreases to 12.83% based on turnout – still substantial, but actually a full percentage point below the Republican turnout edge in CD 2 (13.84%).

**H. CD 1 and CD 3 Are Competitive In Clark County**

**(1) Governor**

<b>Governor Results in 2010 General</b>										
CD	Reg	Votes	Curtis	DiSimone	Fitzgibbons	Honig	Lampitt	Reid	Sandoval	None
1	258361	166549	804	1289	779	732	998	73581	85970	2396
		100.00%	0.48%	0.77%	0.47%	0.44%	0.60%	44.18%	51.62%	1.44%
3	275532	175493	1080	1386	847	890	1168	79653	87822	2647
		100.00%	0.62%	0.79%	0.48%	0.51%	0.67%	45.39%	50.04%	1.51%
CC 4	202383	120138	662	921	717	549	667	63821	50839	1961
		100.00%	0.55%	0.77%	0.60%	0.46%	0.56%	53.12%	42.32%	1.63%

The results in the above table were obtained by selecting the precincts in the proposed new Districts in Clark County from the Statement of Votes for the 2010 Governor’s Contest, then adding the votes cast for all precincts in the new district. In spite of the Democratic edge in registration in CD 1 and CD 3, Governor Sandoval received over 50% of the vote. In the Clark County portion of CD 4, Commissioner Reid won 53.12 % of the vote – a ten point edge, which is much less than the registration edge for Democrats.

**(2) Lieutenant Governor**

<b>Lieutenant Governor Results 2010 General</b>						
District	Reg	Votes	Fitzgibbons	Krolicki	Sferrazza	None
CD 1	258361	162886	5547	83862	68259	5219
		100.00%	3.41%	51.48%	41.91%	3.20%
CD 3	275532	171903	6209	86161	73522	6011
		100.00%	3.61%	50.12%	42.77%	3.50%
CC CD 4	202383	117381	4263	48854	59878	4386
		100.00%	3.63%	41.62%	51.01%	3.74%

The Lieutenant Governor’s race is similarly shows essentially the same results as the Governor’s race. A strong Republican candidate can win in both CD1 and CD 3.



## **I. Conclusion**

This proposal for the new Congressional District boundaries for Nevada is the product of much hard work by a few citizen volunteers. We believe that, if it is adopted, it will serve the best interests of all Nevadans, regardless of party affiliation or other diverse characteristics.